



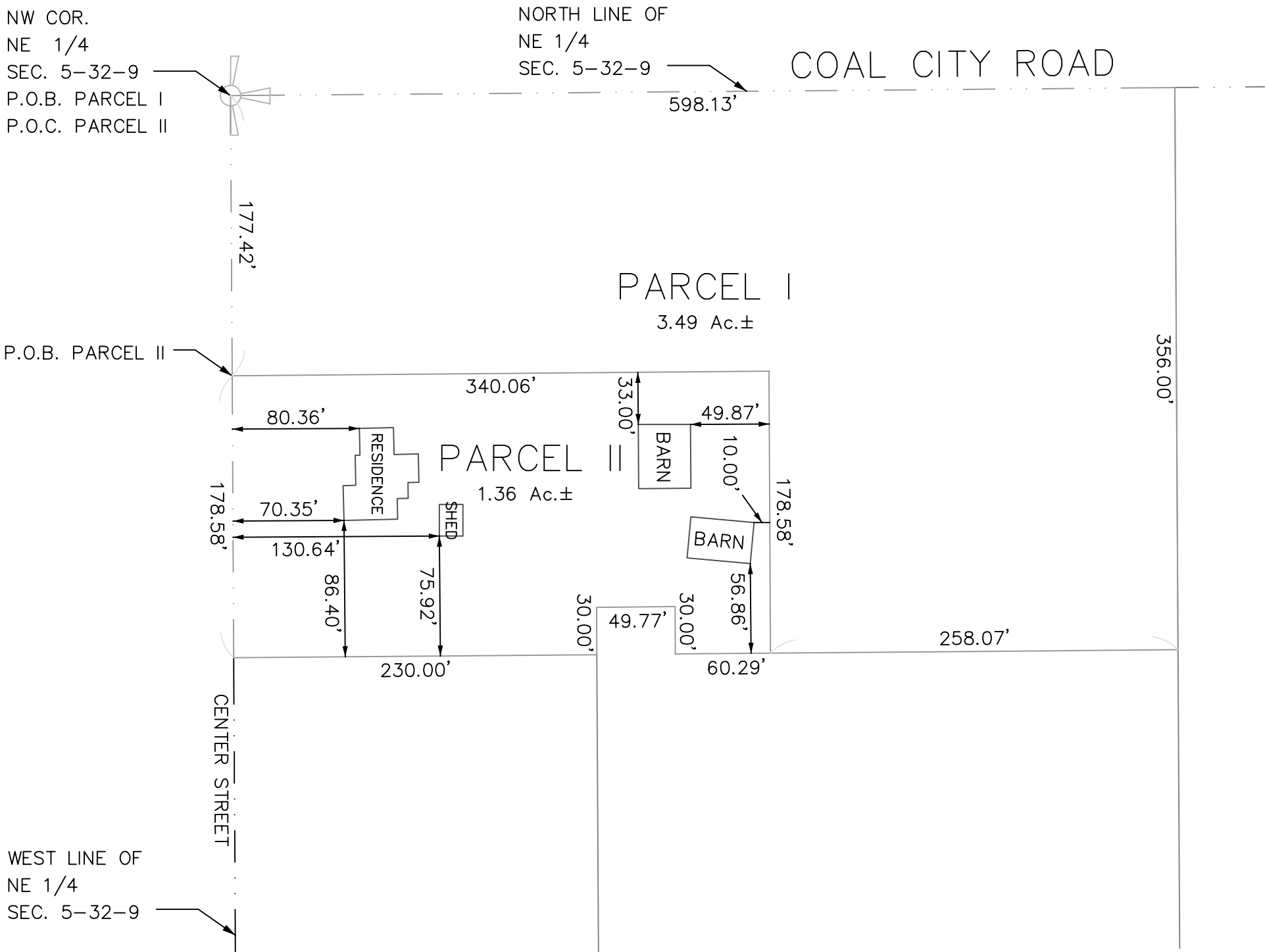
EXHIBIT PLAT

Riverside Surveying, LLC
50 Forest Avenue, Suite G, Riverside, Illinois 60546
Phone (708) 442-4545 of FAX (708) 442-4515



PARCEL I:
THAT PART OF THE NORTHEAST QUARTER OF SECTION 5, TOWNSHIP 32 NORTH, RANGE 9 EAST OF THE THIRD PRINCIPAL MERIDIAN, DESCRIBED AS FOLLOWS: BEGINNING AT THE NORTHWEST CORNER OF SAID NORTHEAST QUARTER; THENCE EAST ALONG THE NORTH LINE OF SAID NORTHEAST QUARTER FOR A DISTANCE OF 598.13 FEET; THENCE SOUTH ALONG A LINE PARALLEL WITH THE WEST LINE OF SAID NORTHEAST QUARTER FOR A DISTANCE OF 356.00 FEET; THENCE WEST ALONG A LINE PARALLEL WITH SAID NORTH LINE FOR A DISTANCE OF 258.07 FEET; THENCE NORTH ALONG A LINE PARALLEL WITH SAID WEST LINE FOR A DISTANCE OF 95.80 FEET; THENCE WEST ALONG A LINE PARALLEL WITH SAID NORTH LINE FOR A DISTANCE OF 39.86 FEET; THENCE NORTH ALONG A LINE PARALLEL WITH SAID WEST LINE FOR A DISTANCE OF 59.78 FEET; THENCE WEST ALONG A LINE PARALLEL WITH SAID NORTH LINE FOR A DISTANCE OF 300.20 FEET, TO A POINT ON THE WEST LINE OF SAID NORTHEAST QUARTER; THENCE NORTH ALONG SAID WEST LINE FOR A DISTANCE OF 200.42 FEET, TO THE POINT OF BEGINNING, ALL IN WILL COUNTY, ILLINOIS.

PARCEL II:
THAT PART OF THE NORTHEAST QUARTER OF SECTION 5, TOWNSHIP 32 NORTH, RANGE 9 EAST OF THE THIRD PRINCIPAL MERIDIAN, DESCRIBED AS FOLLOWS: COMMENCING AT THE NORTHWEST CORNER OF SAID NORTHEAST QUARTER; THENCE SOUTH ALONG THE WEST LINE OF SAID NORTHEAST QUARTER FOR A DISTANCE OF 177.42 FEET, TO THE POINT OF BEGINNING; THENCE SOUTH ALONG SAID WEST LINE FOR A DISTANCE OF 178.58 FEET; THENCE EAST ALONG A LINE PARALLEL WITH THE NORTH LINE OF SAID NORTHEAST QUARTER FOR A DISTANCE OF 230.00 FEET; THENCE NORTH ALONG A LINE PARALLEL WITH SAID WEST LINE FOR A DISTANCE OF 30.00 FEET; THENCE EAST ALONG A LINE PARALLEL WITH SAID NORTH LINE FOR A DISTANCE OF 49.77 FEET; THENCE SOUTH ALONG A LINE PARALLEL WITH SAID WEST LINE FOR A DISTANCE OF 30.00 FEET; THENCE EAST ALONG A LINE PARALLEL WITH SAID NORTH LINE FOR A DISTANCE OF 60.29 FEET; THENCE NORTH ALONG A LINE PARALLEL WITH SAID WEST LINE FOR A DISTANCE OF 178.58 FEET; THENCE WEST ALONG A LINE PARALLEL WITH SAID NORTH LINE FOR A DISTANCE OF 340.06 FEET, TO THE POINT OF BEGINNING, ALL IN WILL COUNTY, ILLINOIS.



LEGEND

— · — · — · — 1/4 SECTION LINE
● IRON PIPE

State of Illinois } s.s.
County of Grundy }

I, KENNETH KENNEDY, do hereby certify that a land survey has been made under my supervision of the above described property and that the plat hereon drawn is a correct representation of said survey. Distances are given in feet and decimal parts thereof.
Given under my hand and seal at Morris, Illinois.

Date: 12/01/06



REVISIONS: REV 1: 7/13/07, PER CLIENT

IMPROVEMENTS LOCATED:

ILLINOIS PROFESSIONAL LAND SURVEYOR NO. 35-3403

Renews 11/08

Compare All Dimensions Before Building And Report Any Discrepancies At Once. For Building lines, Easements and other restrictions not shown hereon refer to your Deed, Title Policy, Zoning ordinance, ETC...

ORDERED BY: Cxxxxxxxx Cxxxxx

SCALE: 1" = 80' ORDER NO. 2827